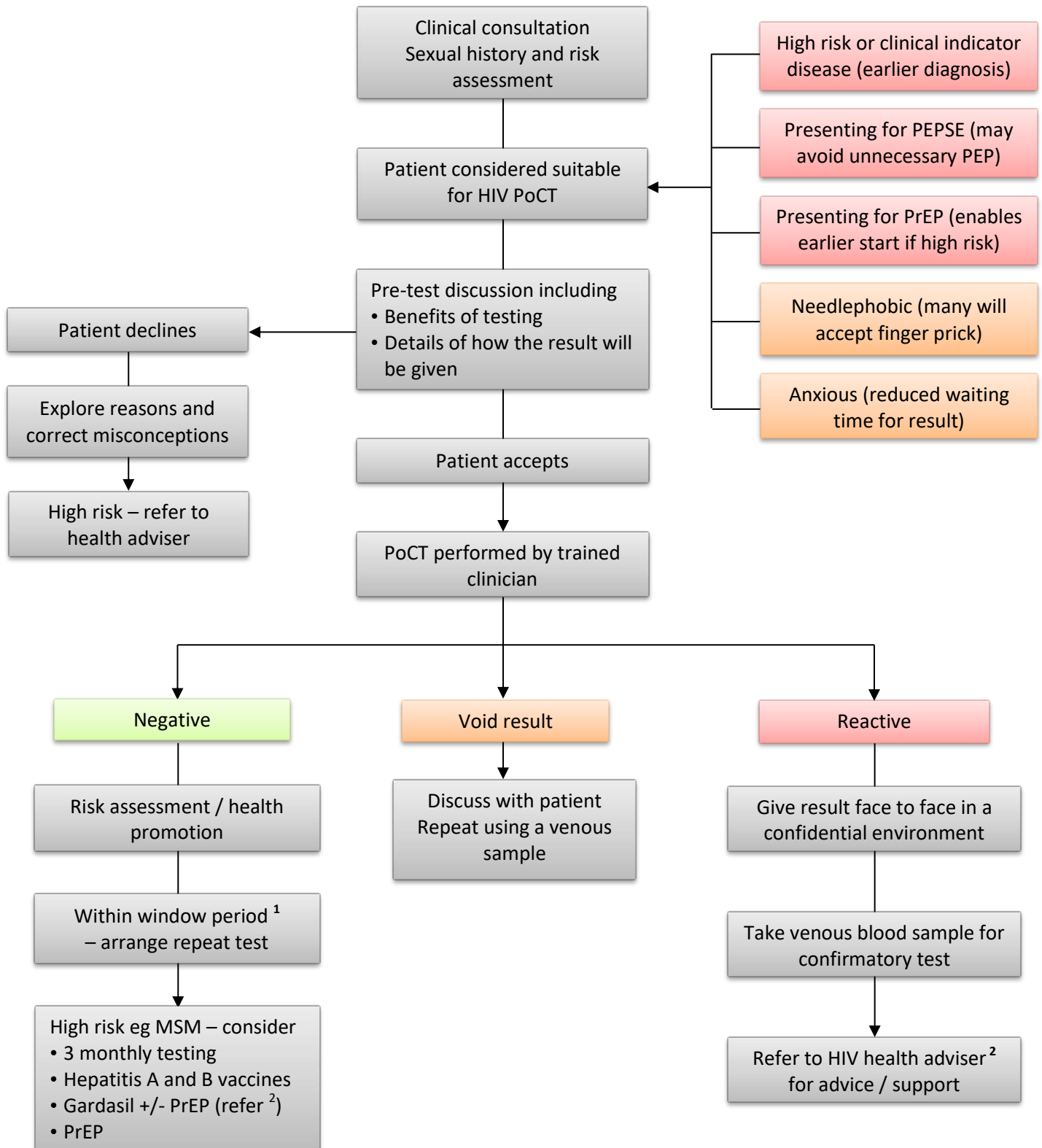


Pathway for HIV point of care testing (PoCT)



¹Window period:
Usually 4 weeks for a 4th generation HIV test (eg Alere Combo). High risk patients are advised to have a repeat test at 8 weeks.

***Depts of HIV:**
Royal Bournemouth Hospital
☎ 01202 704 536 rbc-tr.rbhdosh@nhs.net
Weymouth Community Hospital
☎ 0300 303 1948 GUMReception@dchft.nhs.uk